

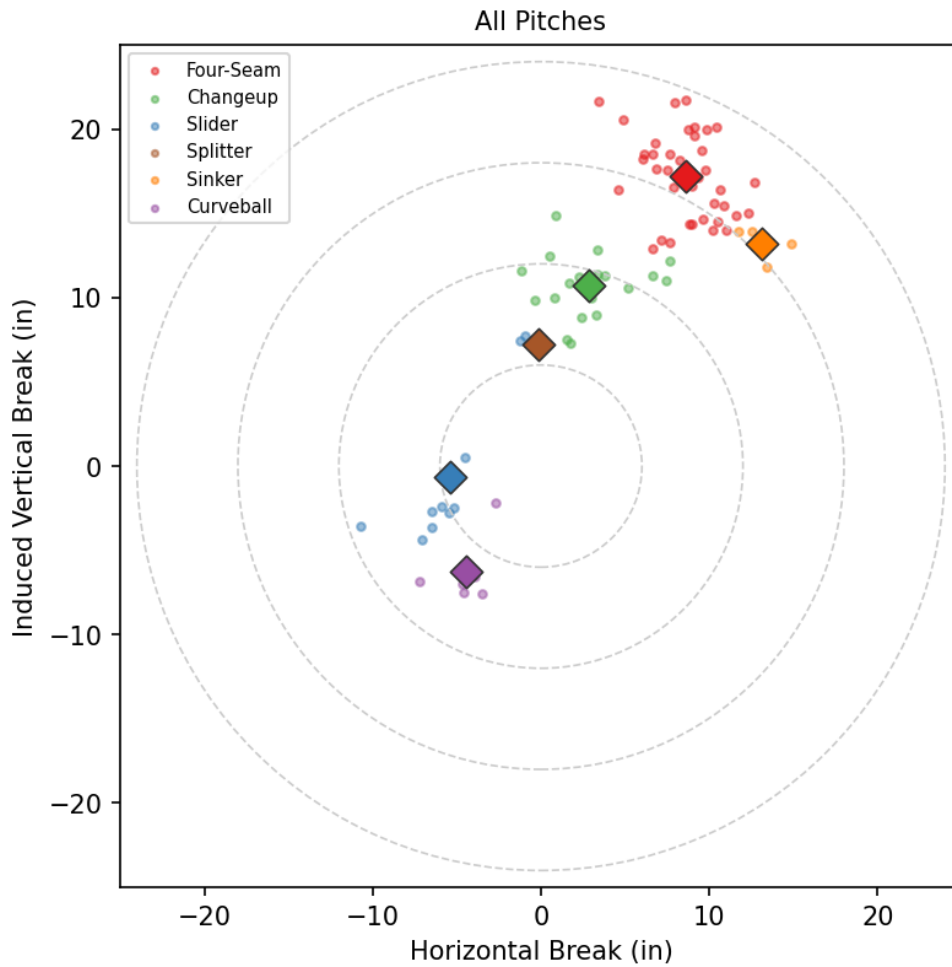
Junior Guerra

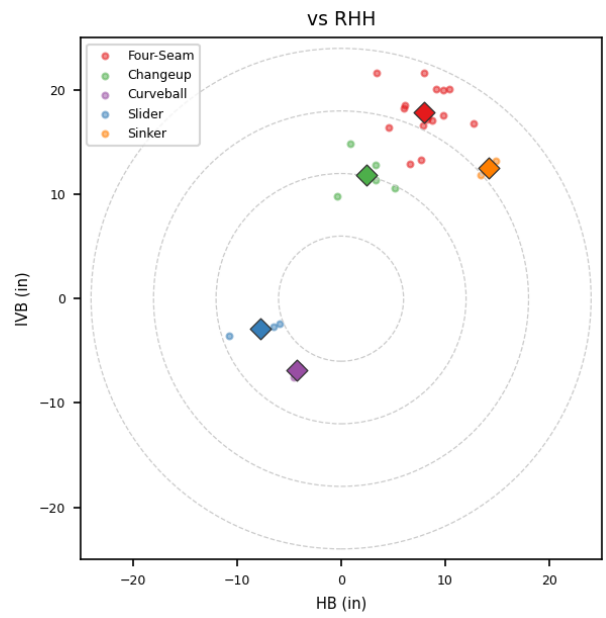
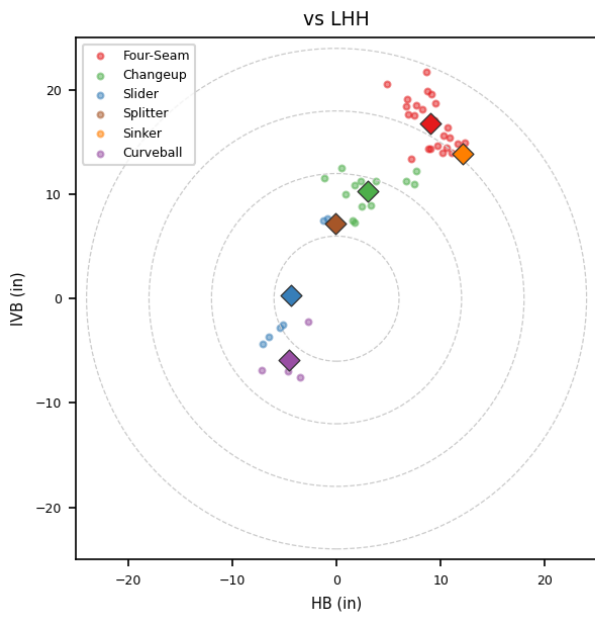
ROJ_MEX | Right | 2026-04-16 to 2026-04-22

Pitching Profile

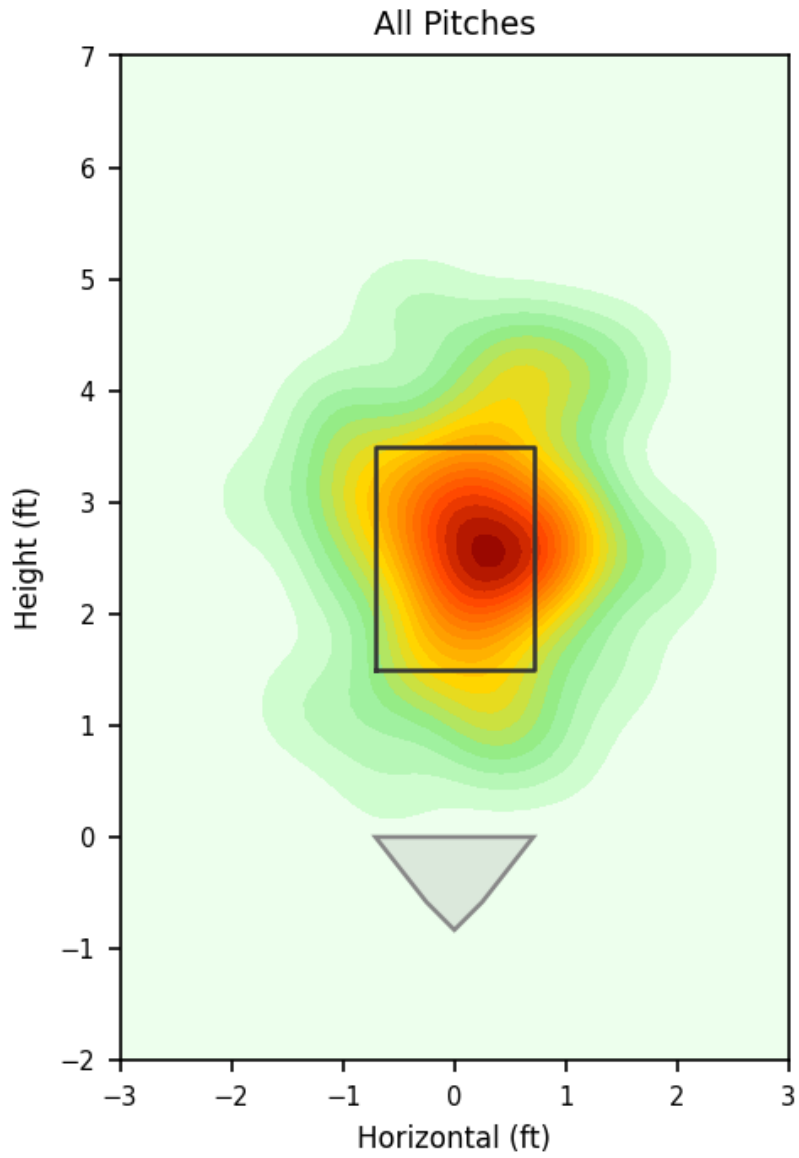
Pitch Type	Count	%	Avg Velo	Max Velo	Avg Spin	IVB	HB	Ext	Whiff%
Four-Seam	41	50.0%	89.5	91.3	2201.0	17.2	8.6	6.3	25.0%
Changeup	19	23.2%	82.4	83.5	1277.0	10.7	2.8	5.9	16.7%
Slider	10	12.2%	81.2	82.1	2330.0	-0.6	-5.4	5.9	40.0%
Curveball	7	8.5%	81.2	81.9	2612.0	-6.3	-4.4	5.9	100.0%
Sinker	4	4.9%	89.3	89.9	2146.0	13.2	13.1	6.3	-
Splitter	1	1.2%	82.1	82.1	1111.0	7.2	-0.1	5.8	-

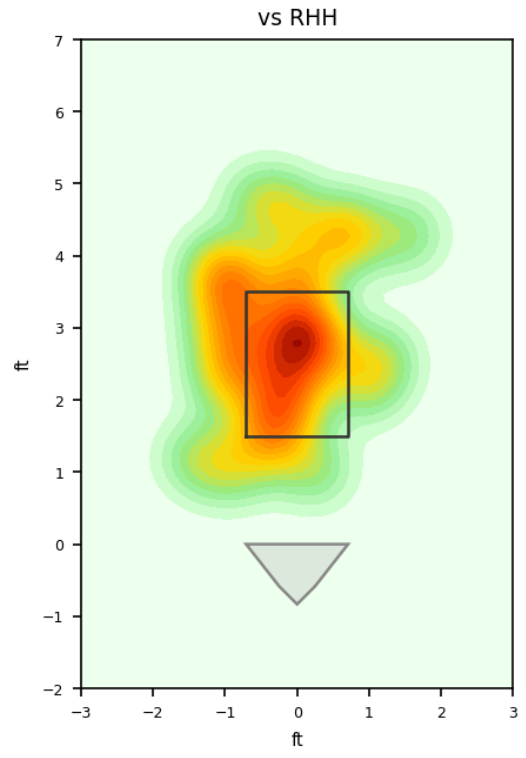
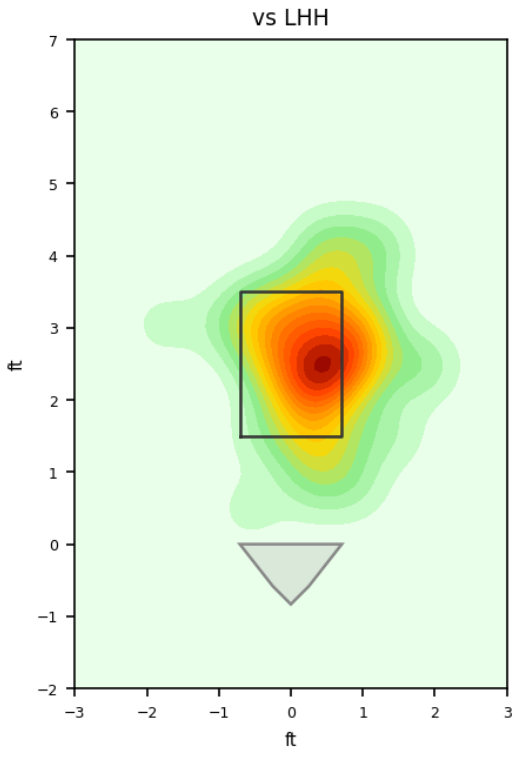
Movement Profile



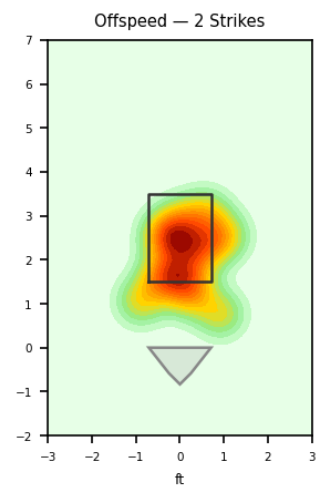
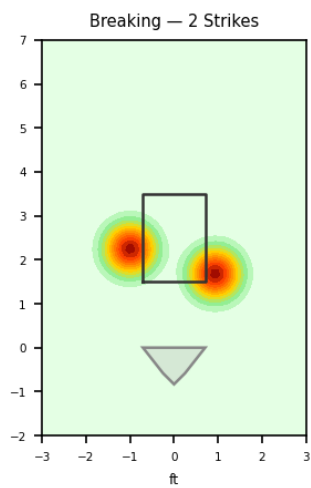
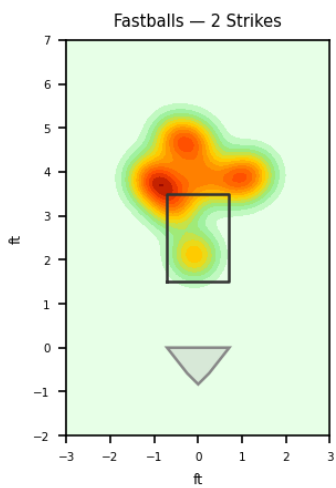
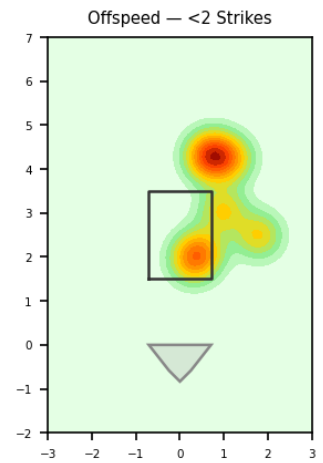
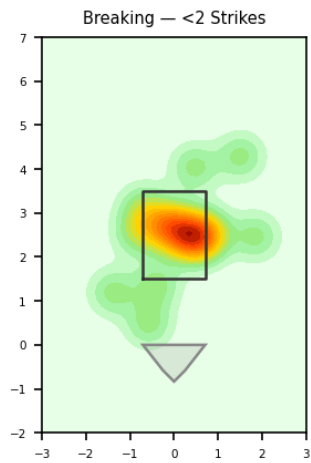
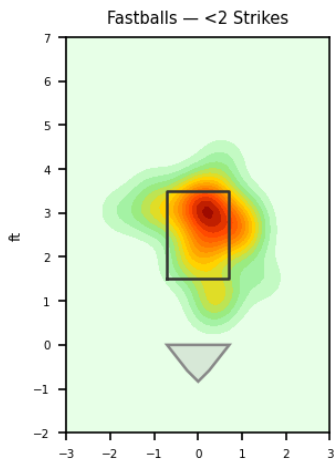


Location Density

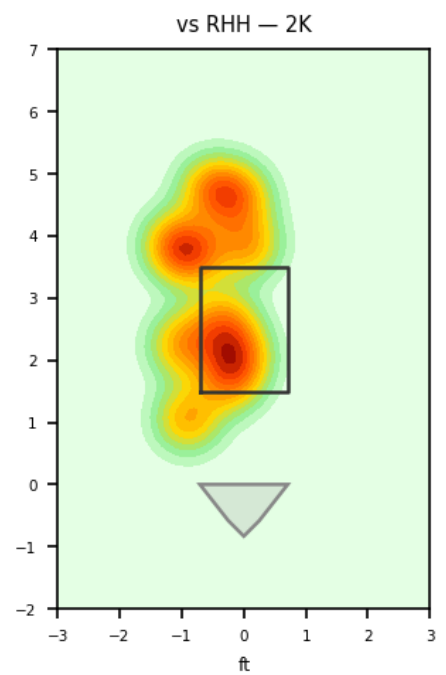
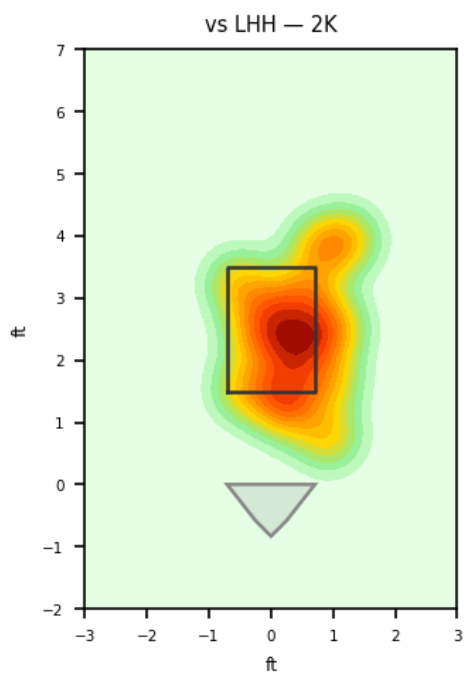
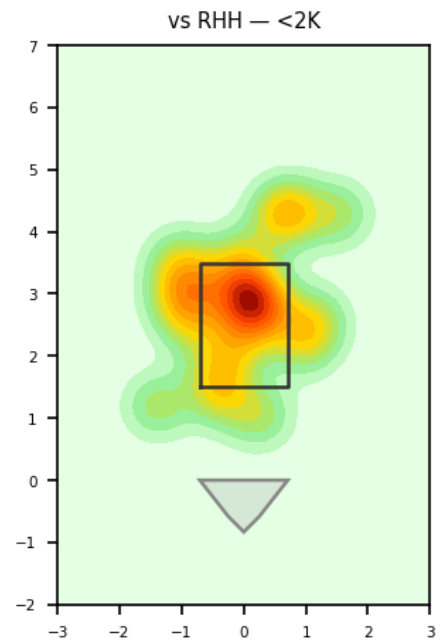
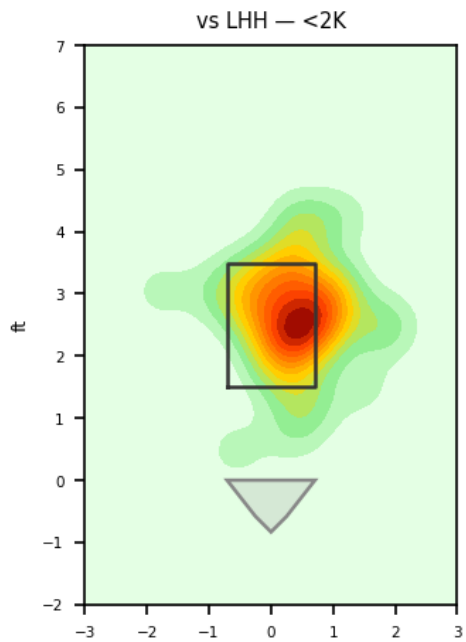




Location by Pitch Type & Count



Location by Handedness & Count



Splits vs LHH

Pitch	Count	%	Velo	Spin	IVB	HB	Whiff%
Four-Seam	25	47.2%	89.5	2180.0	16.8	9.0	20.0%
Changeup	14	26.4%	82.3	1263.0	10.3	3.0	-
Slider	7	13.2%	81.3	2213.0	0.4	-4.4	25.0%
Curveball	4	7.5%	81.0	2598.0	-5.9	-4.5	-
Sinker	2	3.8%	89.1	2191.0	13.9	12.1	-
Splitter	1	1.9%	82.1	1111.0	7.2	-0.1	-

Splits vs RHH

Pitch	Count	%	Velo	Spin	IVB	HB	Whiff%
Four-Seam	16	55.2%	89.6	2235.0	17.8	8.0	33.3%
Changeup	5	17.2%	82.7	1317.0	11.9	2.5	50.0%
Curveball	3	10.3%	81.4	2630.0	-6.8	-4.2	100.0%
Slider	3	10.3%	80.9	2604.0	-2.9	-7.7	100.0%
Sinker	2	6.9%	89.5	2101.0	12.5	14.1	-

Advanced Pitching (TrackMan)

Stat	Value	Stat	Value
Pitches	82	Games	1
Avg Velo	86.1 mph	Max Velo	91.3 mph
Avg Spin	2022.0 rpm	Extension	6.1 ft
IVB	11.2 in	HB	4.6 in
Whiffs	7	BIP	27
Avg Exit Velo	78.0 mph	Dates	2026-04-18 to 2026-04-18

Pitch Mix

Pitch Type	Count	Avg Velo	Max Velo	Avg Spin	IVB	HB	Whiffs	BIP
Four-Seam	41	89.5	91.3	2201.0	17.2	8.6	2	13
Changeup	19	82.4	83.5	1277.0	10.7	2.8	1	7
Slider	10	81.2	82.1	2330.0	-0.6	-5.4	2	3
Curveball	7	81.2	81.9	2612.0	-6.3	-4.4	2	1
Sinker	4	89.3	89.9	2146.0	13.2	13.1	0	2
Splitter	1	82.1	82.1	1111.0	7.2	-0.1	0	1

Traditional Pitching (API)

Stat	Value	Stat	Value
W-L	1-0	ERA	1.69
G/GS	1/1	SV/HD	0/0
IP	5.1	H/ER/HR	5/1/0
K/BB	3/2	K/BB Ratio	1.5
WHIP	1.31	K/9	5.1
BB/9	3.4	BF	21